

FINE MOTOR NOTE READING



BEAD BOXES

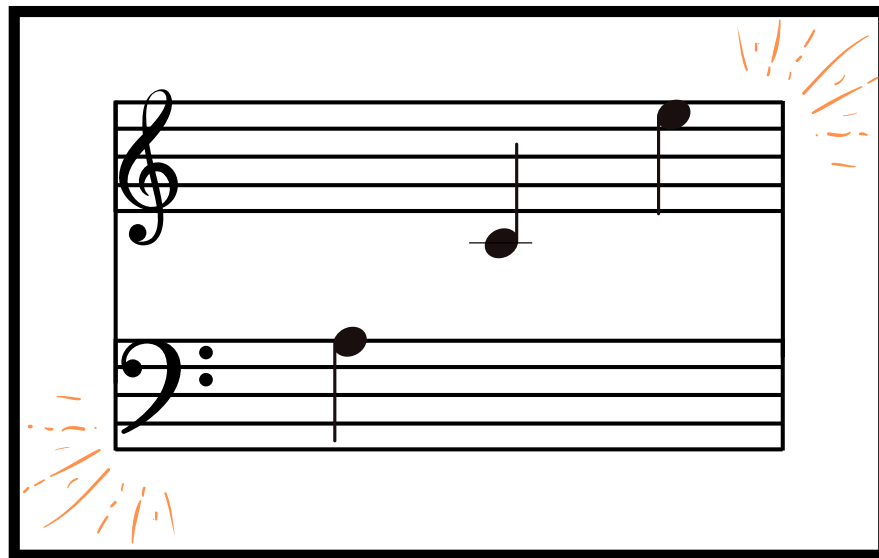
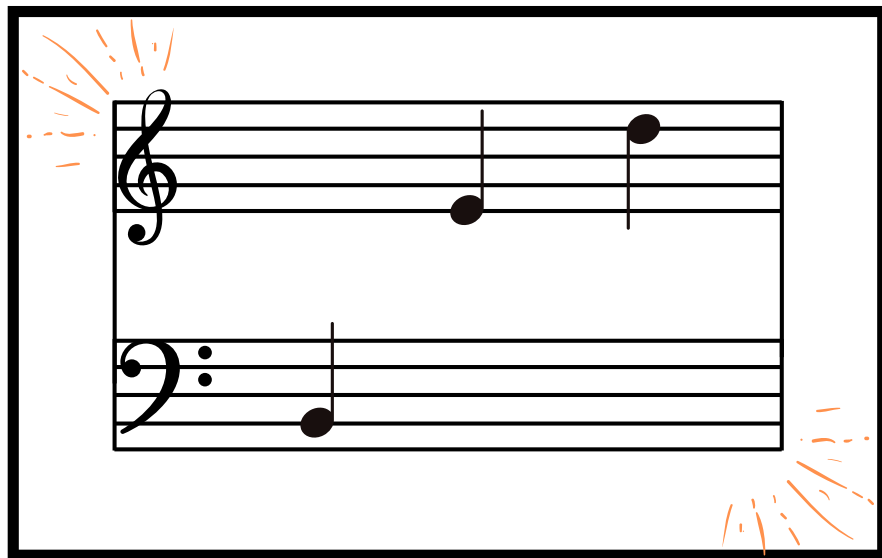
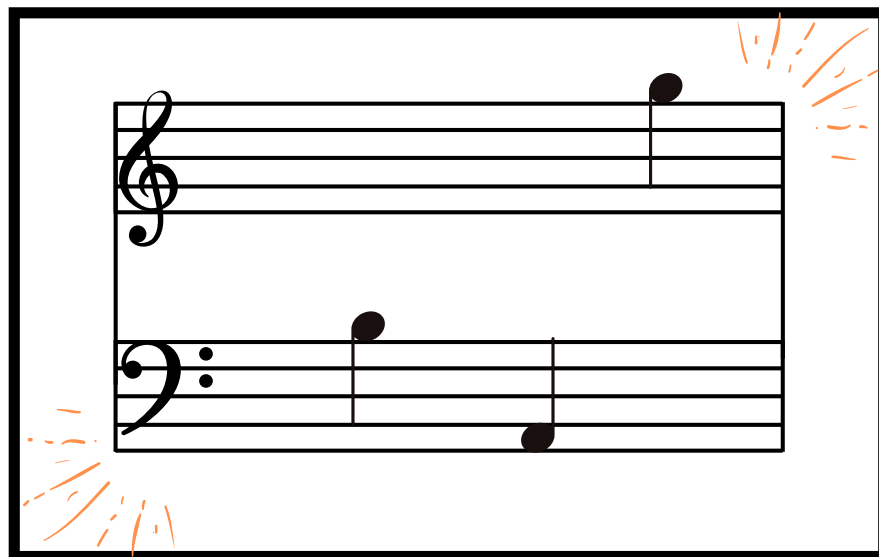
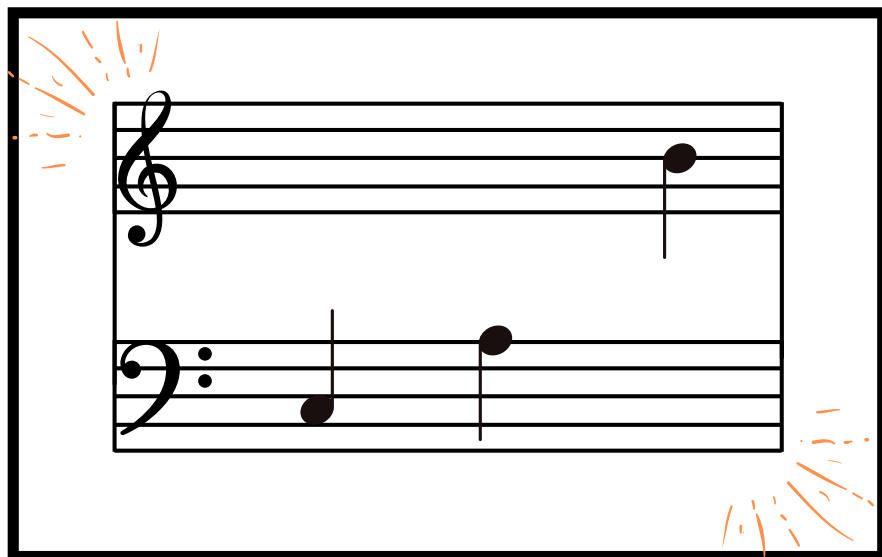


- INSTRUCTIONS -

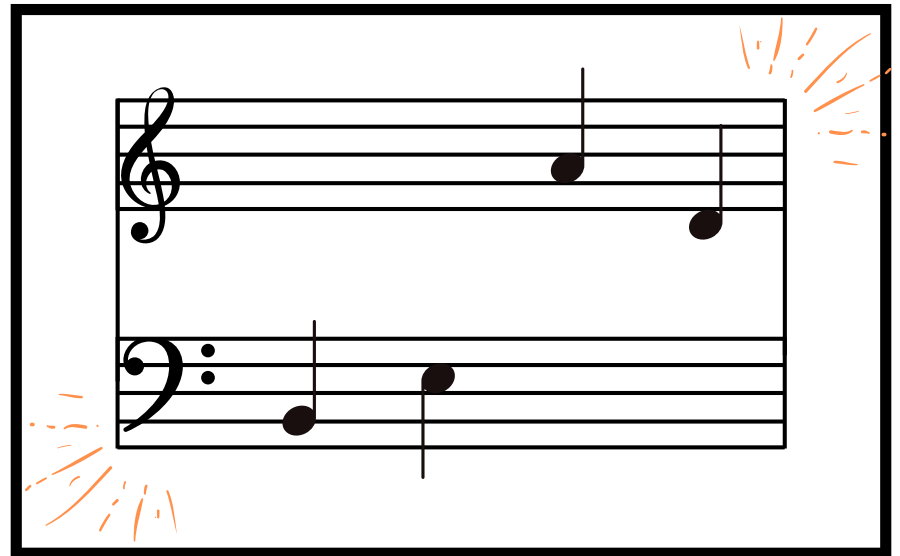
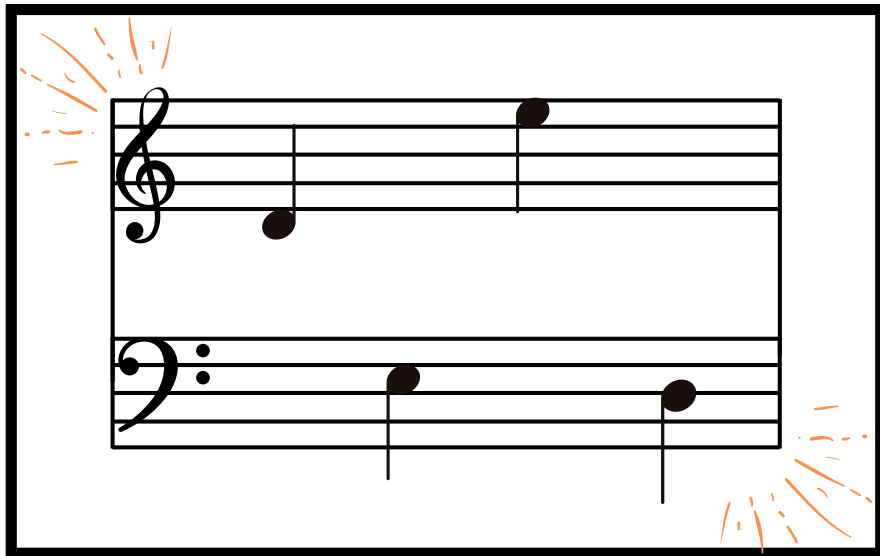
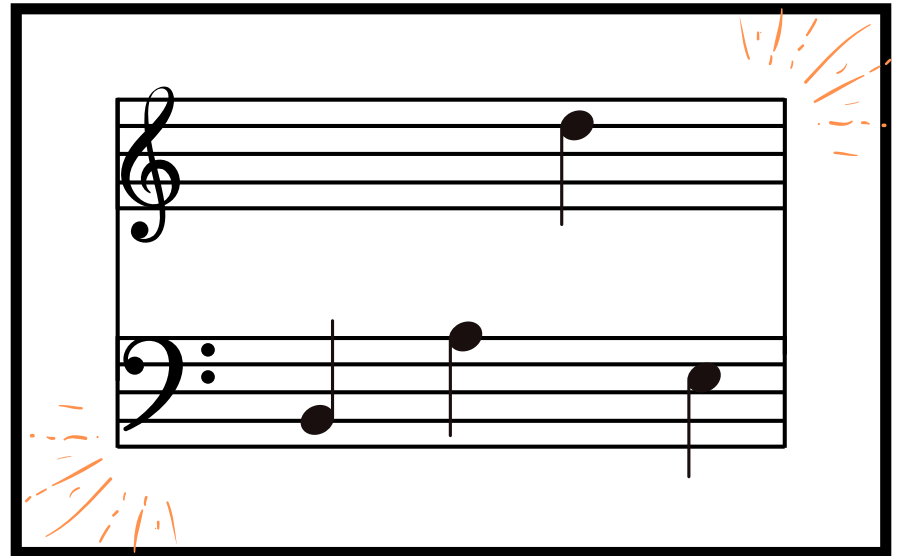
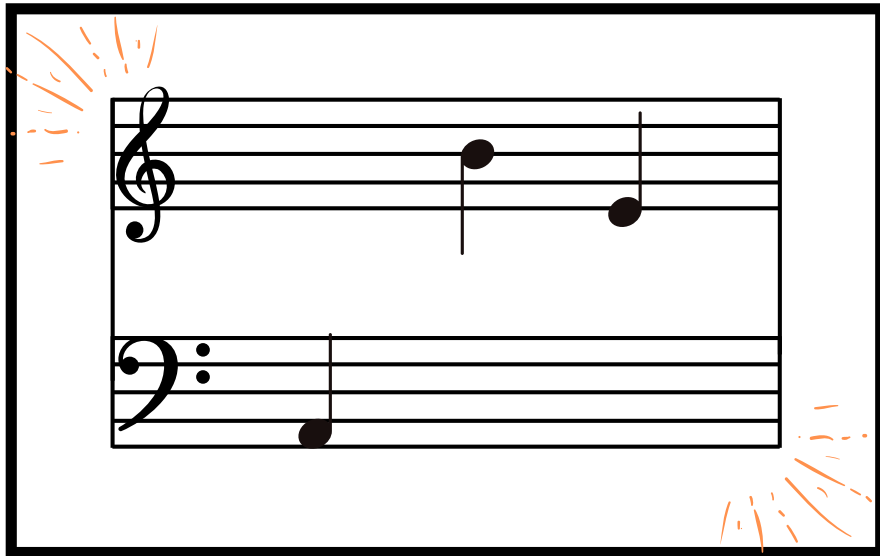
1. PRINT CARDS BELOW ON CARDSTOCK. CUT AND LAMINATE FOR LASTING USE.
2. HOLE PUNCH 1 HOLE IN THE SIDE OF EACH LAMINATED CARD AND LOOP A PIPE CLEANER THROUGH THE HOLE.
3. PUT YOUR CARDS WITH PIPE CLEANERS AND SQUARE LETTER BEADS IN A PLASTIC PENCIL BOX.
4. HAVE YOUR STUDENTS STRING THE BEADS ON THE PIPE CLEANER IN THE ORDER THAT MATCHES THE LETTERS ON THE CARD.



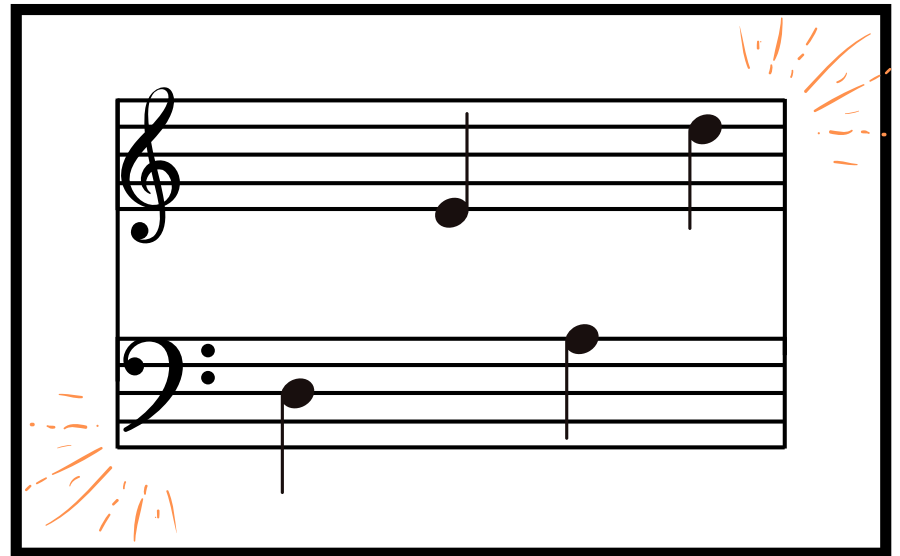
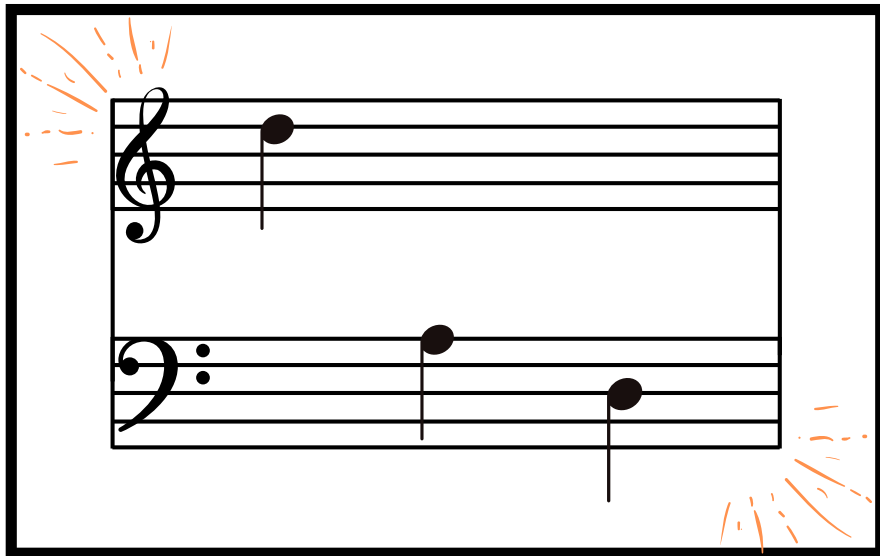
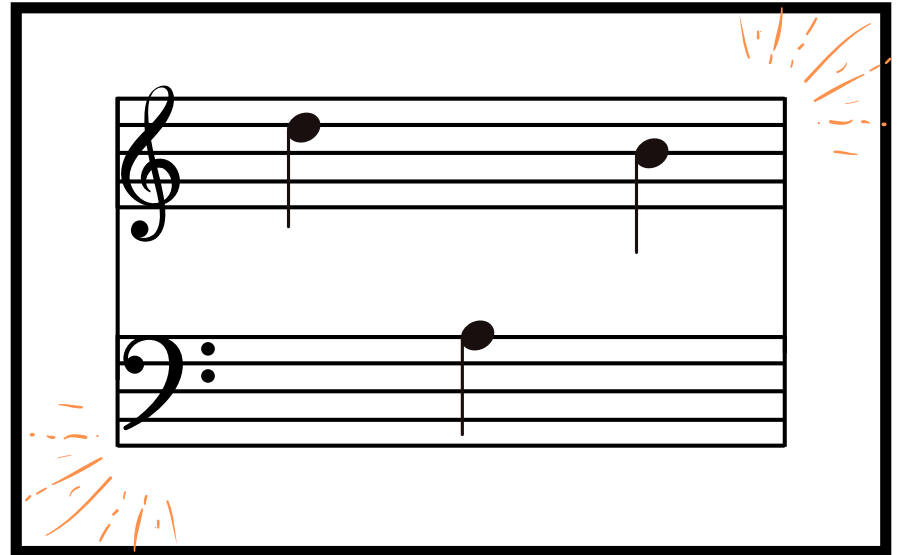
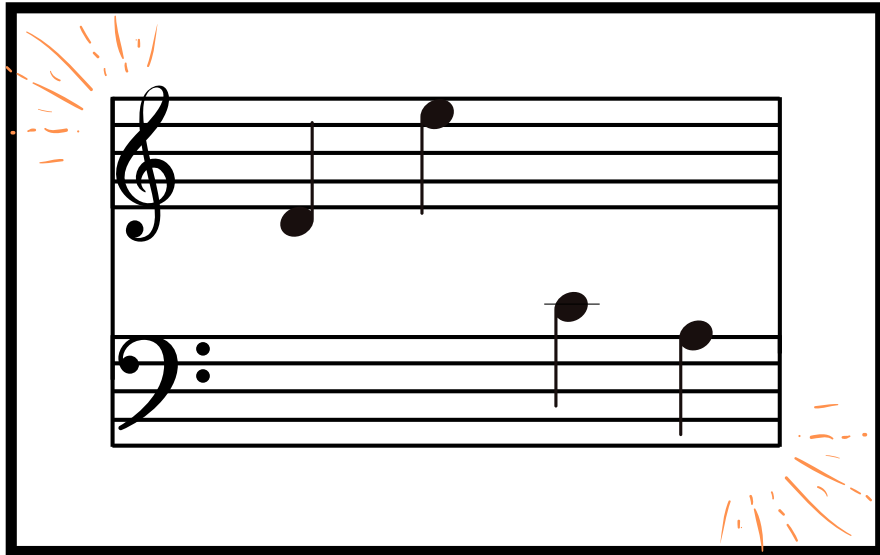
GRAND STAFF



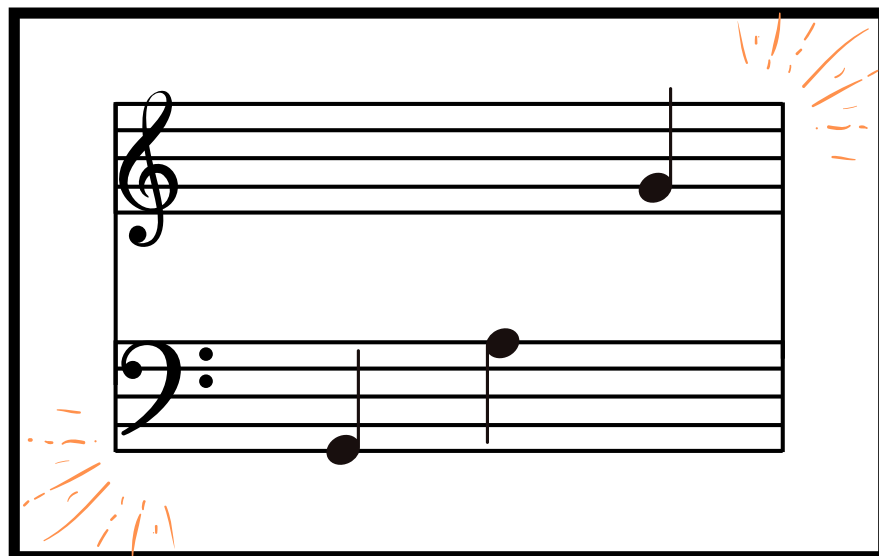
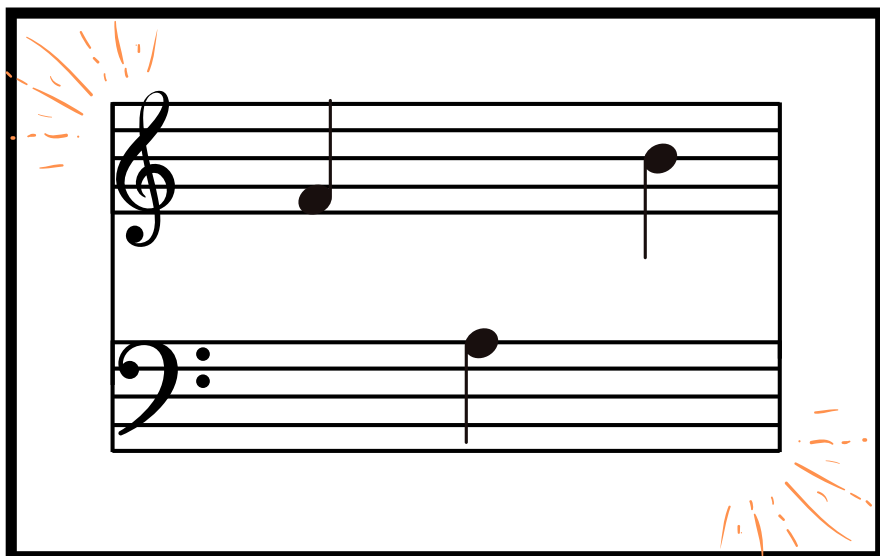
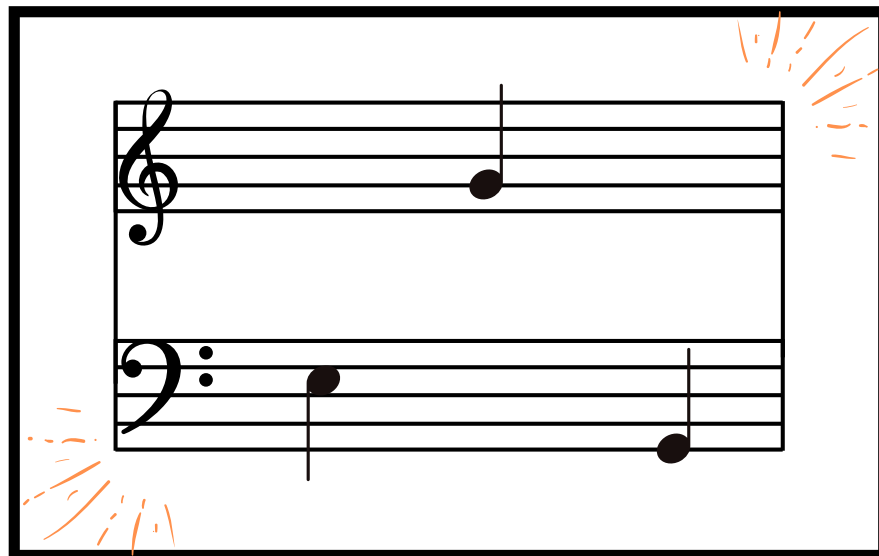
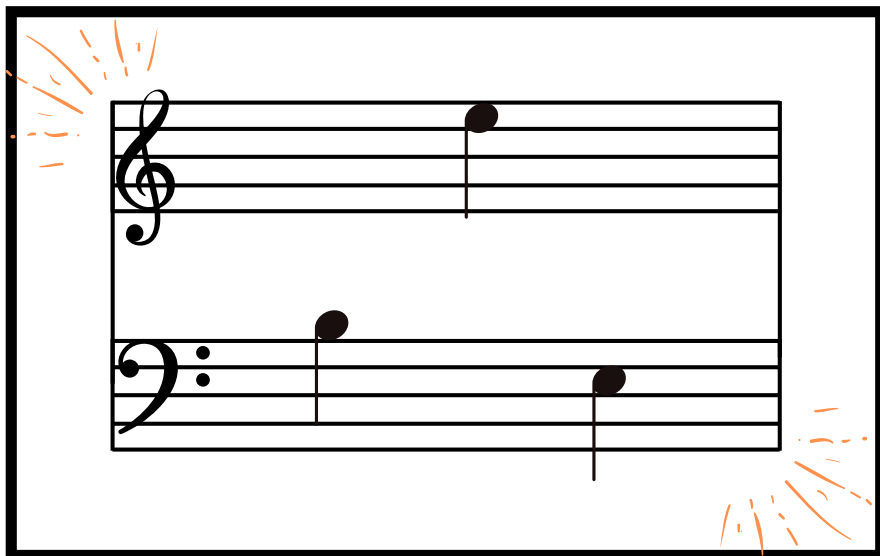
GRAND STAFF



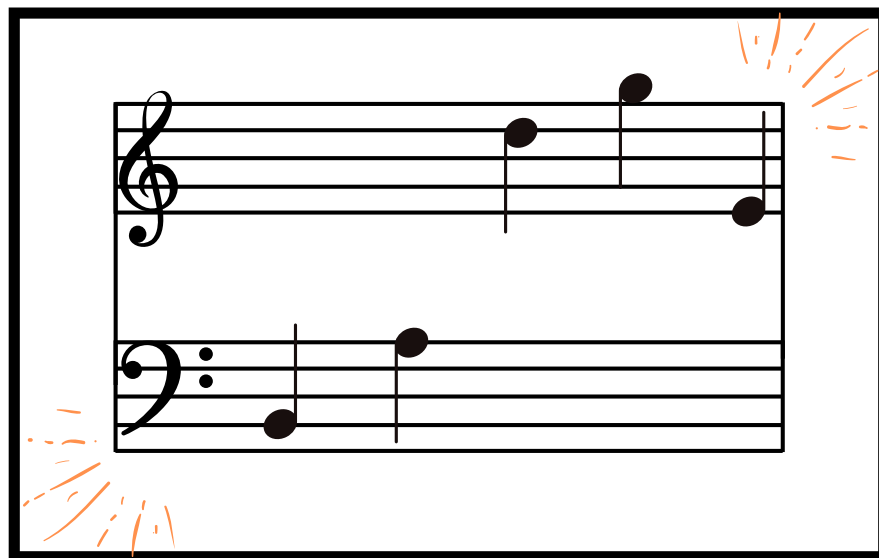
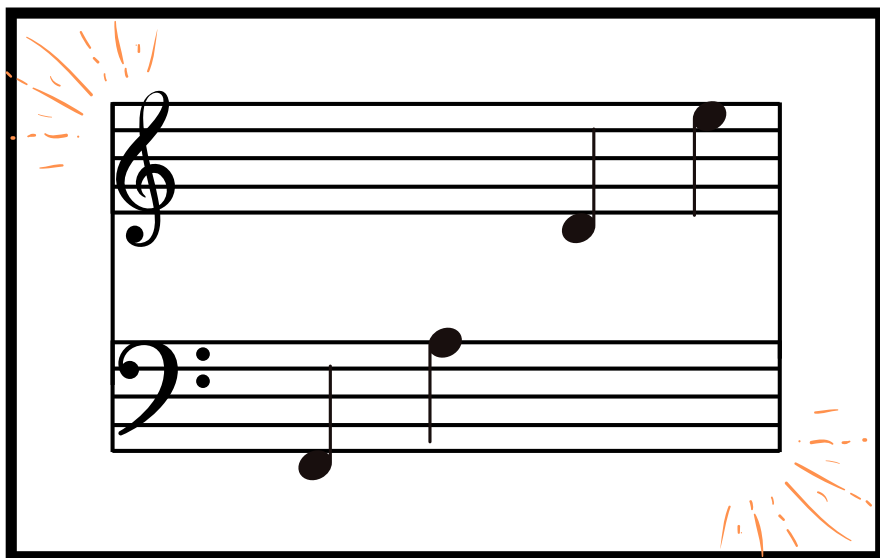
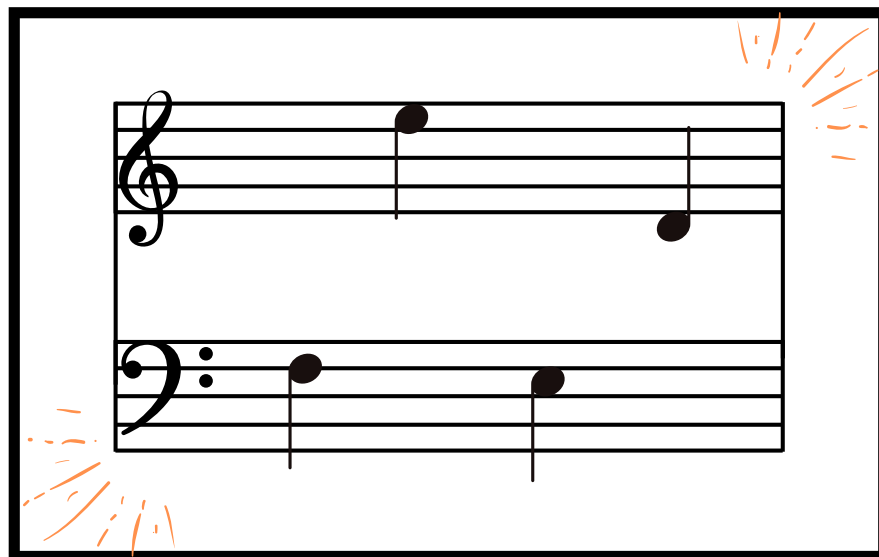
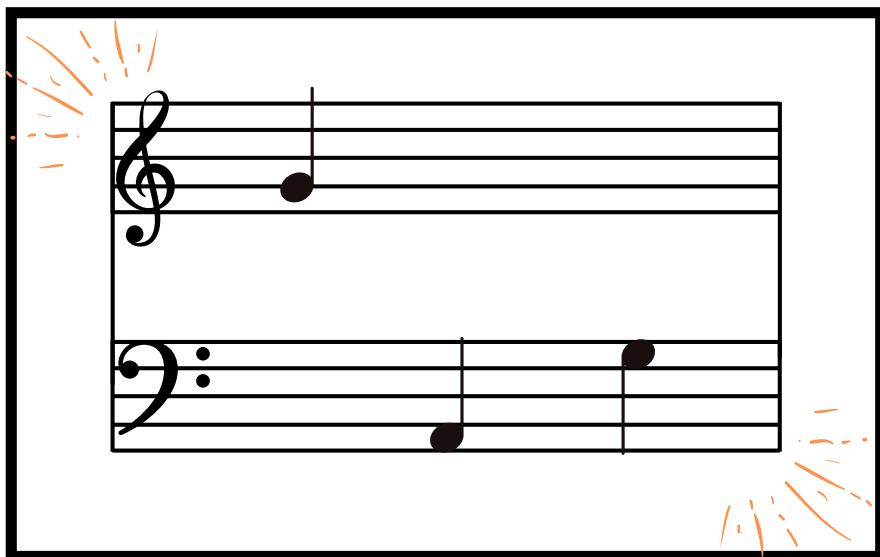
GRAND STAFF



GRAND STAFF



GRAND STAFF



GRAND STAFF

